



SAU #33
Student Services

Fall 2020





$\sqrt{123}$



THANK YOU

STUDY
HARD!



...To Our TEAM!

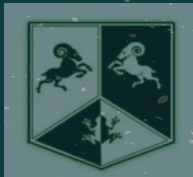


+ x ÷

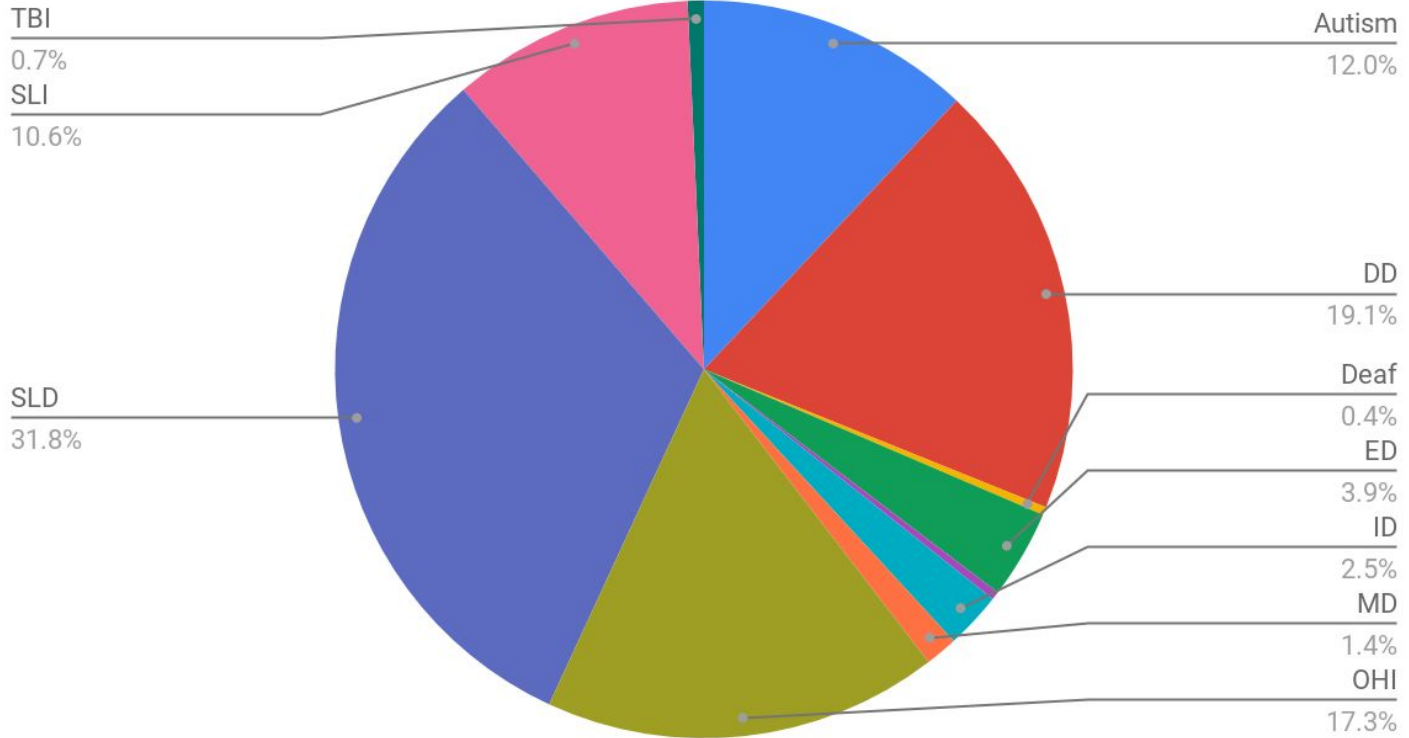


Data, Data

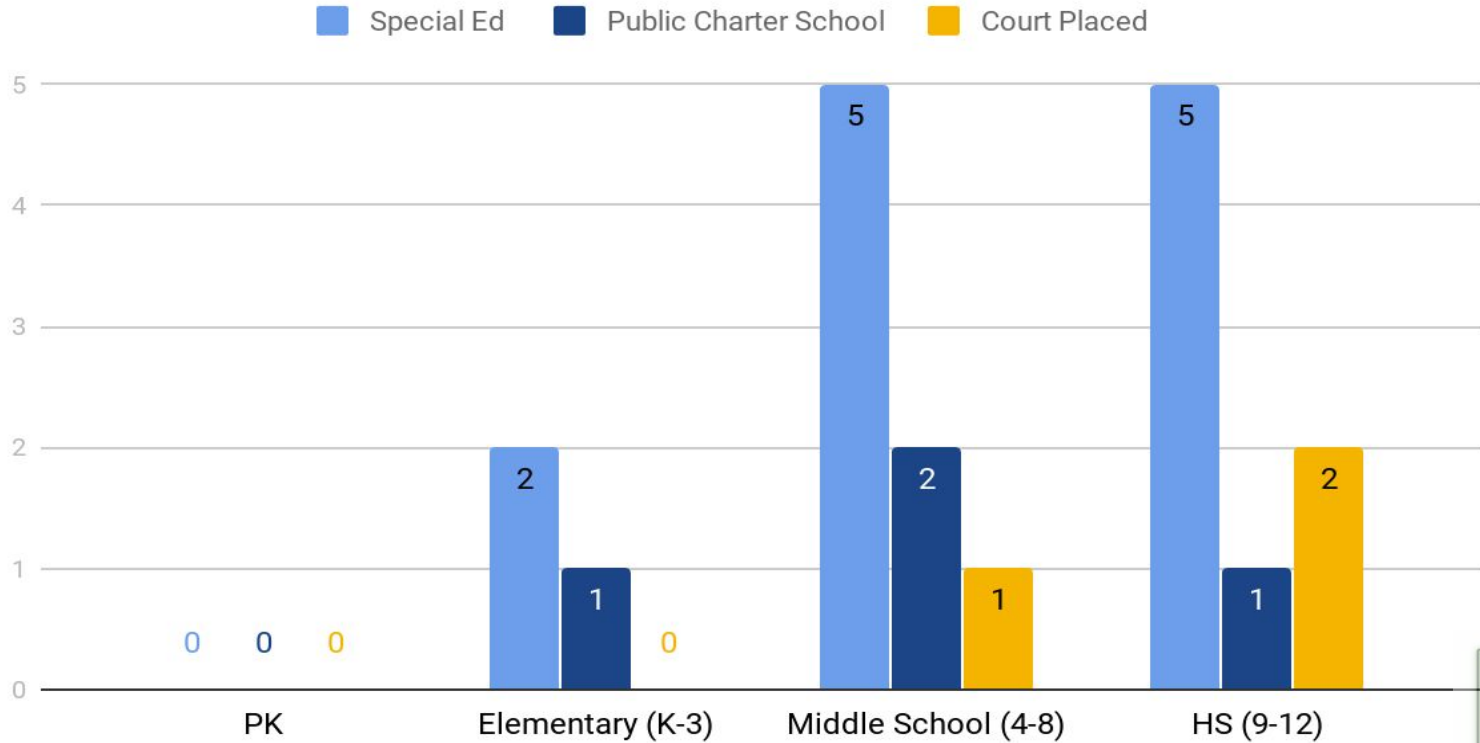
And More Data!!



Special Ed Identifications



Out of District



“

The most powerful tool we have for
influencing behavior is the

RELATIONSHIP

we build with kids.

”

- *Casey O’Roarty*



What does this mean
for our students and
families?

ChildFind

- Concerned parents of **2.5-5.0 year old** who are not currently enrolled in our district
- Question if child has learning difficulties will impede their growth and development in school and perhaps cause failure in the future.
- 4 Times a Year: November, January, April and June





Other Aspects of Student Services



Rehabilitative Act

- # of Students = 90
- Updated forms through Drummond Woodsum



Homeless Youth

- Developing greater ways to identify our youth/families in transitions
- Further DW PD offerings
- Social Workers will be taking a more active role



English as a Second Language

- Support Students by differentiating instruction/Providing greater access
- Low number of Students currently requiring this support service





Celebrate Good Times....

Around the Raymond
School District....



CONSTELLATIONS,
CONSTELLATIONS,
CONSTELLATIONS!



4th Grade
Transition!

Executive
Order
#48



AWESOME WORDS and PICTURES

TEAMWORK

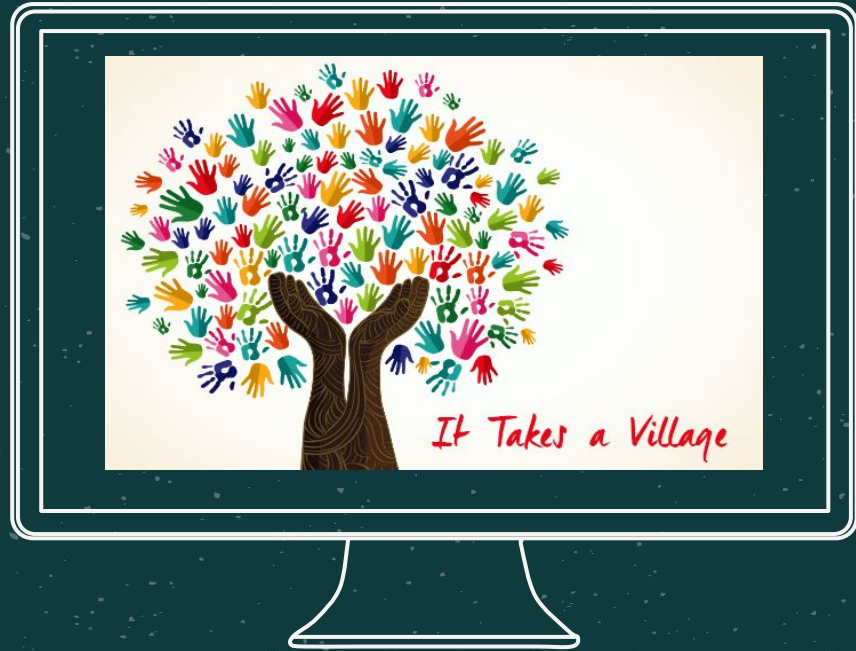


Nurse
Kelsey -
Germ
Experiment



MOVING FORWARD

It Takes a
Village...
Aligning to the
Strategic Plan





A TIMELINE of GOALS!

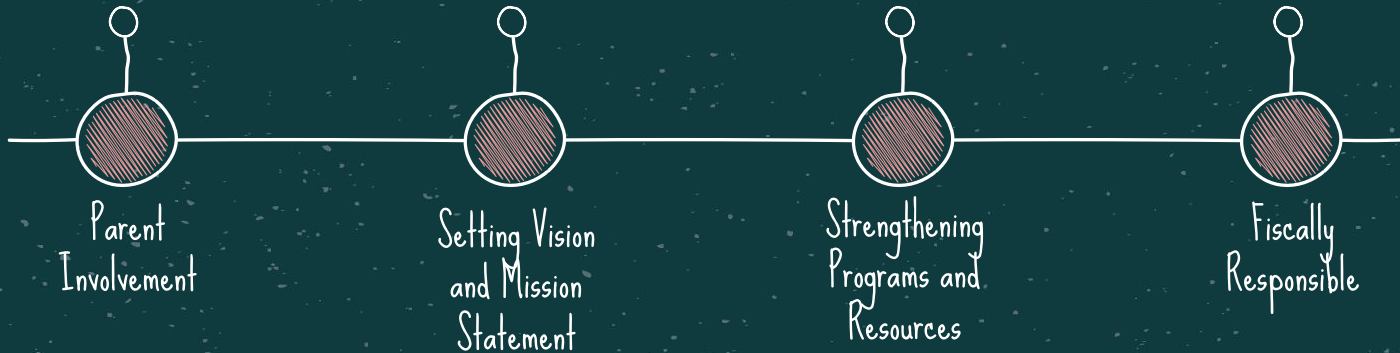
Develop Parent Advisory
and

Maintain Website with
Resources

Where do we need to go?
What do we want from
Student Services?

Review Programs?
Do we have what
we need to ensure
students receive a
FAPE?

Ensuring Students receive
what they need while be-
ing responsible to the
taxpayers



Our Team

Michael
Hatfield

Director



Marissa Nerenburg

Elementary Coordinator

Rebecca Hadik

Middle School Coordinator

Kim Capen

RHS Coordinator