

CURRENT TRAFFIC FLOW

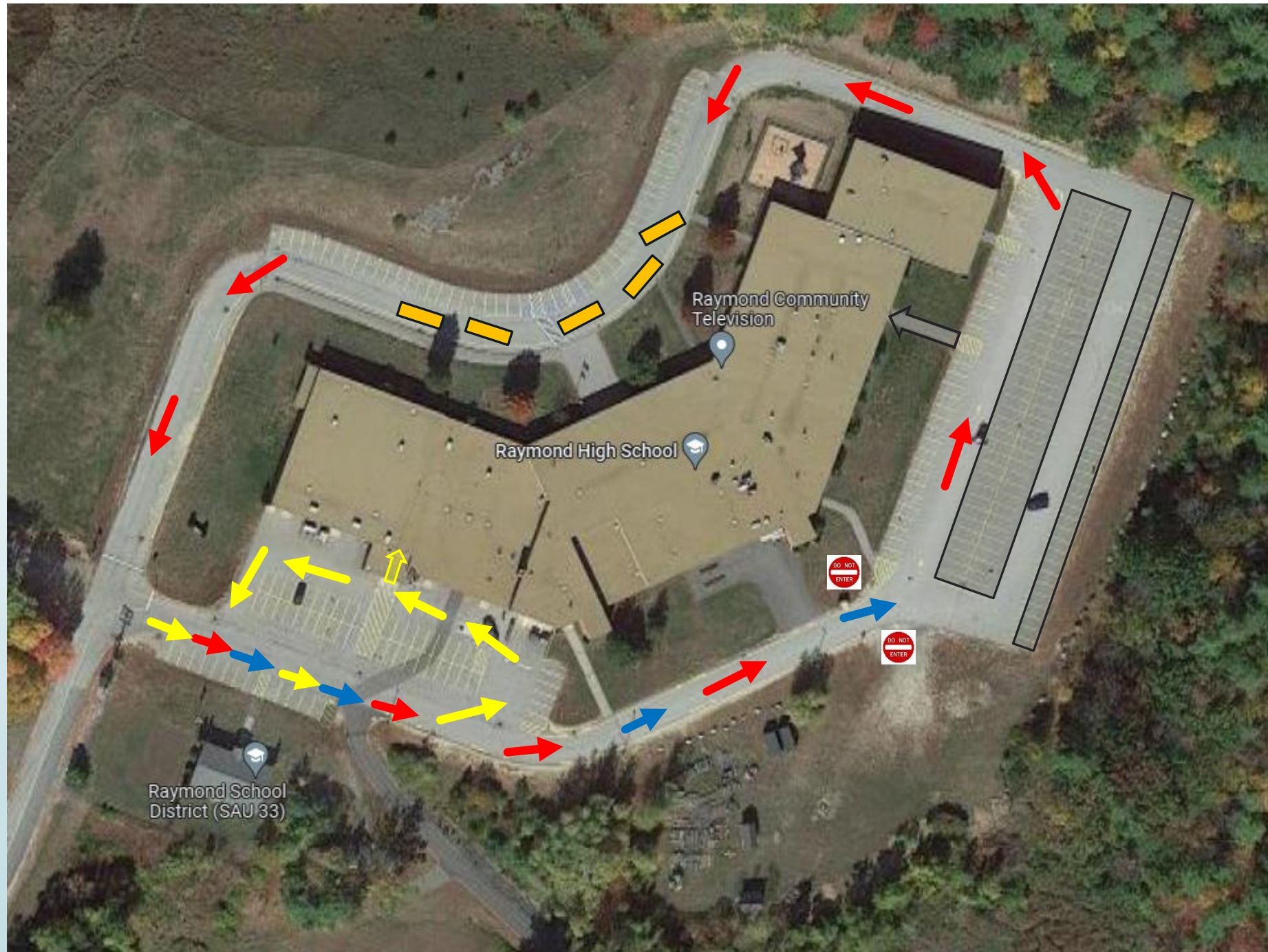
 - Staff, Students, General, Large Buses

 - Small Buses, Parent Drop Off

 - Student traffic

 - Large bus staging, drop off and pickup

 - Student parking



A decorative graphic on the left side of the slide. It features a dark blue vertical bar on the far left. A black arrow points to the right from the top of this bar. Several thin, light blue lines curve downwards and to the right from the bottom of the arrow, creating a sense of flow or movement.

Current Traffic Flow -

- ▶ All traffic enters from the main driveway and takes a right at the intersection at the top of the hill
- ▶ Small buses and students getting dropped off go past the SAU and loop around to drop off at the gym doors
- ▶ Students continue past the loop and to park in the student parking lot and enter through the rear door
- ▶ Large buses, staff and general visitors continue past the student parking lot to enter through the main entrance



Traffic flow out front AM-

- ▶ Buses stage first thing in the morning and open the doors to allow students into the building at 7am
- ▶ During the time students are exiting the buses the red flashers are on and the stop signs are out. The last bus also positions itself at an angle to physically block the flow of traffic
- ▶ During staging times traffic can flow past the busses to allow staff to park or others to leave



Traffic flow out back AM -

- ▶ Small buses do not stage and tend to be able to drop the students off when they arrive after 7 using the loop
- ▶ Parents stagger in and drop their students off using the loop – approximately 50 cars
- ▶ Parents need to wait if they end up behind a bus dropping off which, will have the red flashers on and the stop sign out



Traffic flow out front PM -

- ▶ The buses arrive prior to school dismissal and stage in-front of the school allowing traffic to pass
- ▶ The dismissal bell rings at 2:09 at approximately 2:08 the buses angle sideways, put on the flashers and put out the stop signs as to now allow traffic to pass
- ▶ The students are also dismissed to their cars at this time.
- ▶ The buses load while the students in the rear lot line up bumper to bumper behind the buses waiting to leave
- ▶ This is done intentionally to ensure the buses get out first to make it to the next school and so students are forced to go slow due to traffic
- ▶ One late bus from SST arrives approximately 15 min after dismissal and angles out front blocking traffic to load the those students

A decorative graphic on the left side of the slide. It features a dark blue vertical bar on the far left. A black arrow points to the right from the top of this bar. Several thin, light blue lines curve downwards and to the right from the bottom of the arrow, creating a sense of motion or flow.

Traffic flow out back PM -

- ▶ Students being picked up are dismissed at the same time to the gymnasium doors
- ▶ There are also two small busses that pickup at the gym entrance – one is staged most of the time before the students are dismissed and the other comes in later, cuts in front of the parent line and stages out of the traffic flow near the generator
- ▶ Parents also park and wait for the students to go to their cars
- ▶ Approximately 14 cars in line and 25 cars in parking spots



Good but not perfect –

- ▶ This flow has worked well for many years and there have been no accidents that we know of related to the traffic flow
- ▶ Students loading buses out front although blocked by the angle of the bus and protected by the stop sign, flashing lights and the law against passing school buses, do load on the opposite side of the bus from the school
- ▶ Parents out back do park and pickup causing parking lot congestion as they try to leave from parking spots while other cars are entering or staging in the line
- ▶ The small bus has cut in front of the parent drop off line at times to drop their student first
- ▶ As with the other two schools pickup and drop off times are very busy in the parking lots.



Why?

- ▶ The current pattern was setup to provide the overall safest conditions given all the factors during these busy times
- ▶ The one way flow of traffic from the student lot on is intentional for many reasons:
 - ▶ The students are forced to be congested and go slow behind the buses
 - ▶ The students are not able to speed in front of the SAU where it is already congested with other pick ups
 - ▶ After the initial pickup time the SAU/Gym area is used by students for sports teams and SAU visitors so minimizing cars exiting from the back lot is optimal
 - ▶ This pattern allows the least amount of traffic holding up buses trying to get out in order to reach the other schools as early as possible