

Behavioral Health

—

Raymond School District School Board Presentation 4/5/23

Sam Horrigan

Director of Health and Wellness

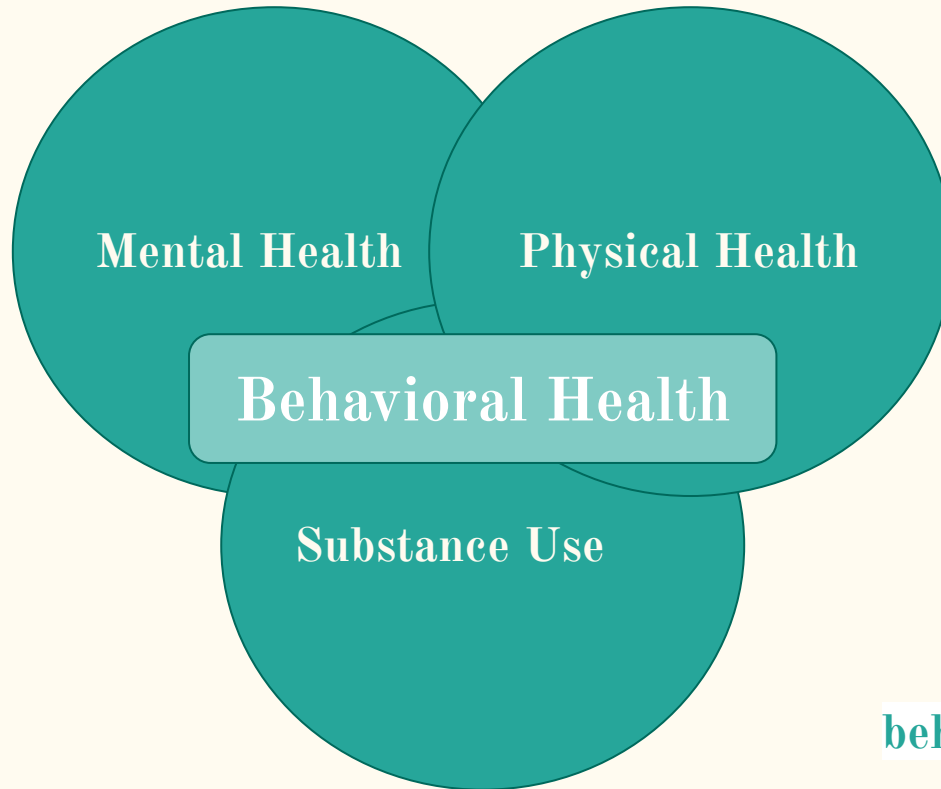
s.horrigan@sau33.com

603-895-3394 x 4304

Today:

- What/who is “Behavioral Health”?
- Behavioral Health Data
- Our Response/Priorities

What is Behavioral Health?



The emotions and behaviors that affect your overall well-being.

Who are our “Behavioral Health” providers?

SAU 33 Staff:

*Director of Health and Wellness

*2 School Psychologists

*4 School Social Workers (*2)

*2 Student Assistance Program
Counselors

5 School Counselors

2 Masters in Social Work Interns

***grant funded

Community Partnerships:

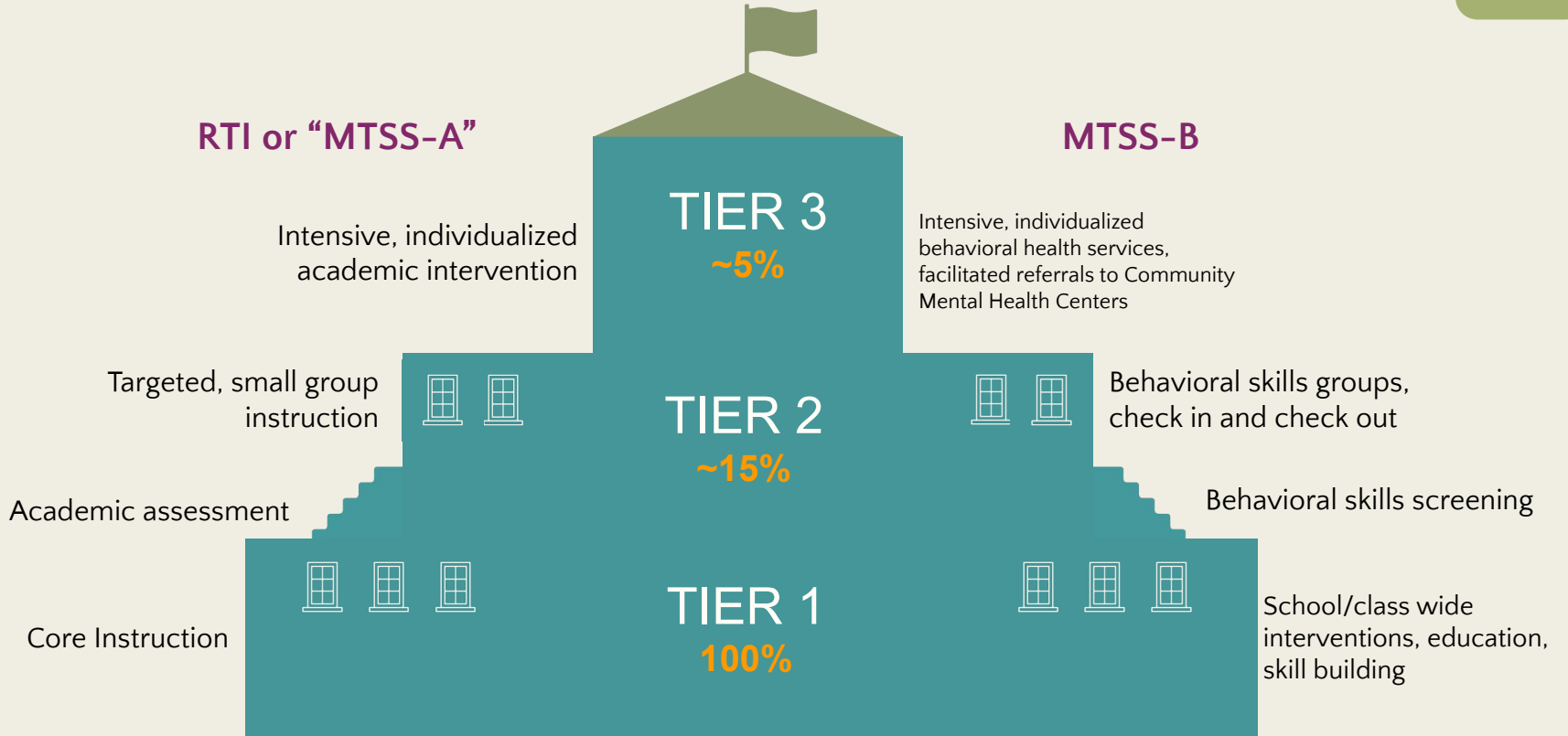
Seacoast Mental Health Center

Raymond Coalition for Youth

Constellations

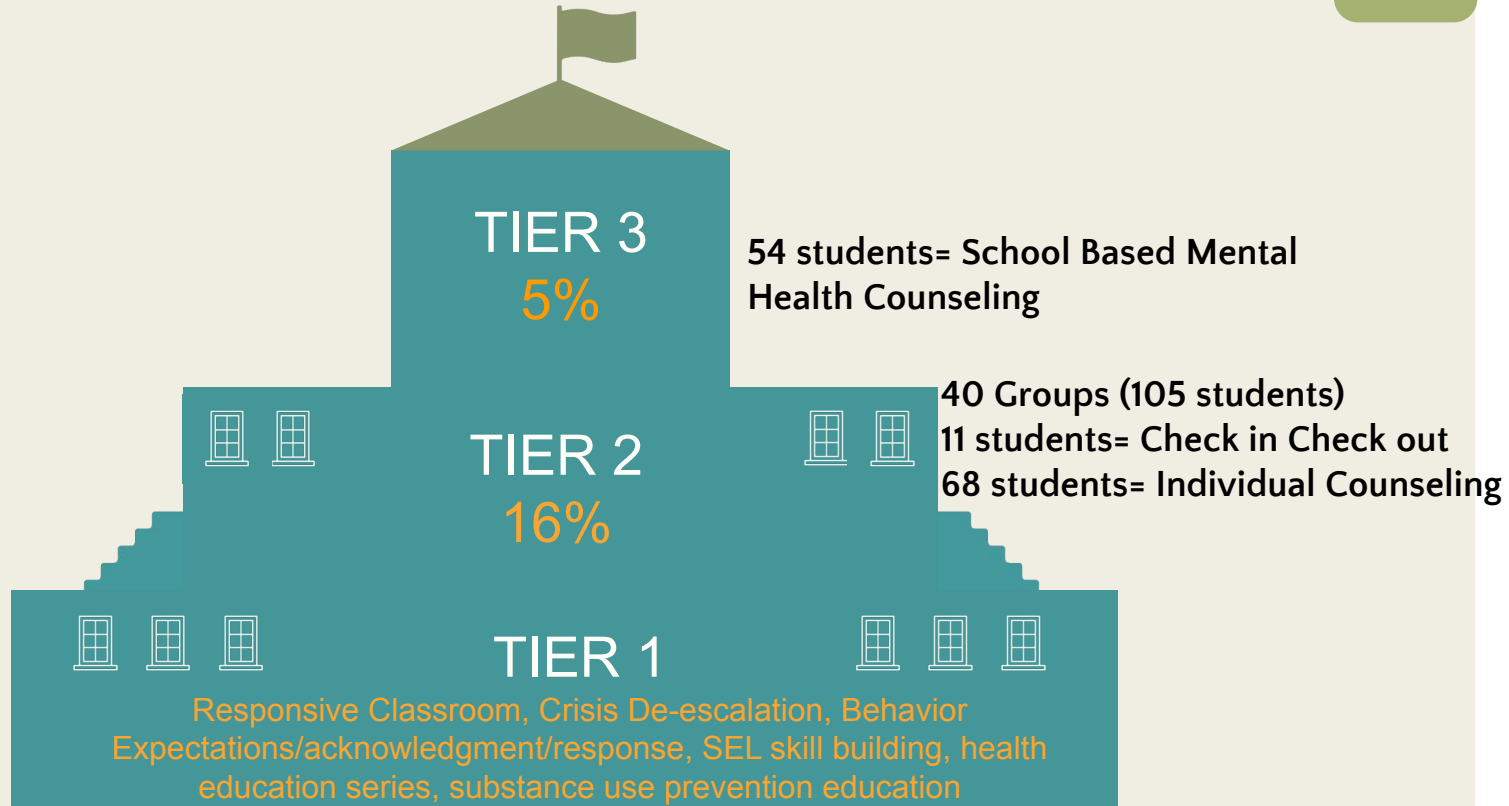
**The behavioral health of our students is
the responsibility of our **WHOLE
COMMUNITY.****

Multi Tiered System of Supports (MTSS)



Data

Raymond School District SY 2022-2023 Tiered Services



***Based on total student enrollment as of 3/28 (1160). Does not include Substance Use counseling or IEP counseling.

Reasons for Referral to Tier 2 and 3 services

LRES:

1. Emotion regulation/self management
2. Social/Friendship concerns
3. Externalizing behaviors
4. Internalizing behaviors
5. Exposure to trauma

IHGMS:

1. Emotion regulation/self management
2. Social/friendship concerns
3. Family concerns
4. Internalizing behaviors
5. Externalizing behaviors

RHS:

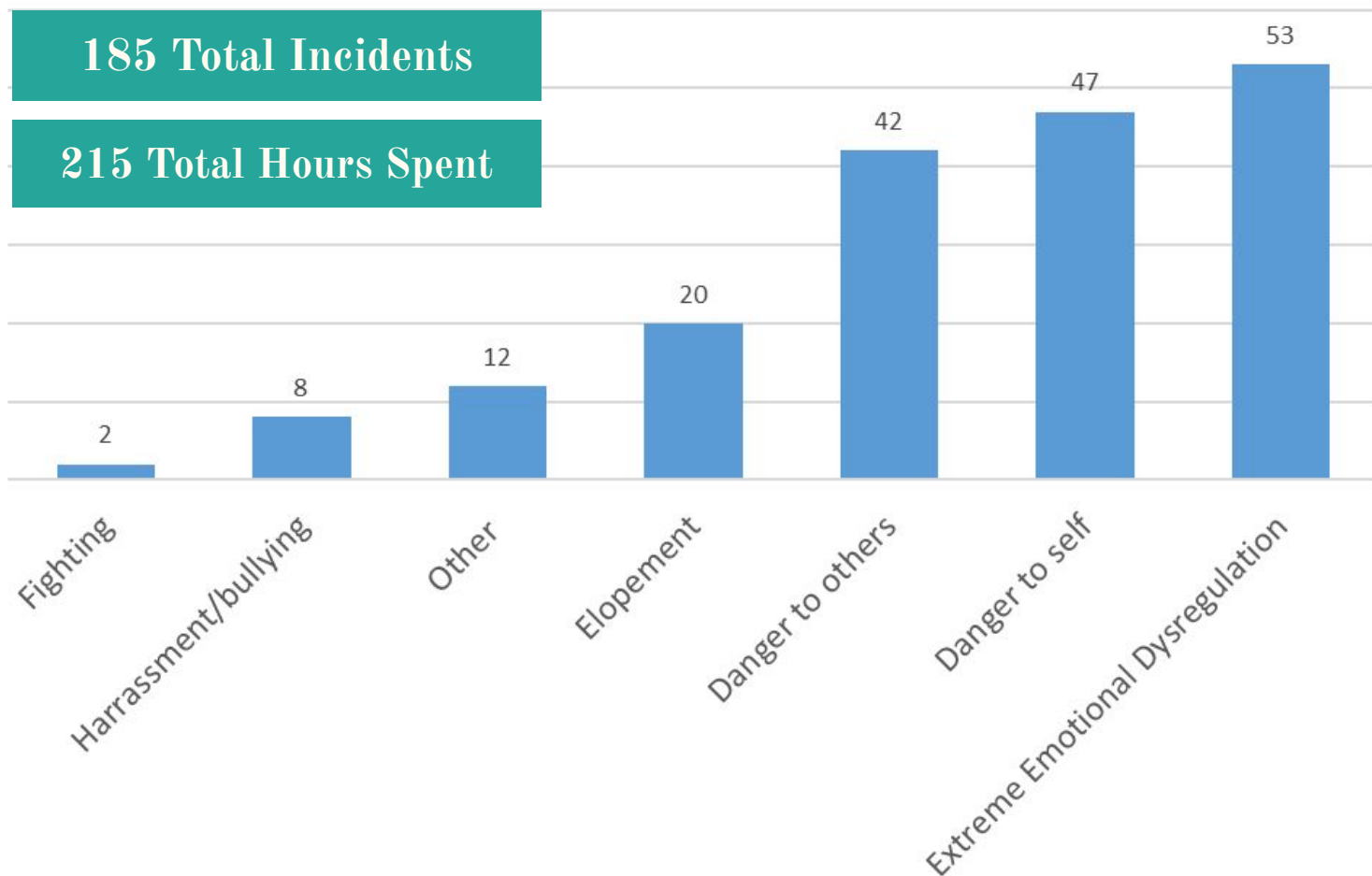
1. Family concerns
2. Social/friendship concerns
3. Emotion Regulation/self management
4. Internalizing behaviors
5. Exposure to trauma

SY 2022-2023

District Behavioral Health Crisis Incidents

185 Total Incidents

215 Total Hours Spent



Avg: 1 hour 45 min per day on acute crisis

Responses can include behavioral health staff, administrators, case manager, etc. depending on crisis

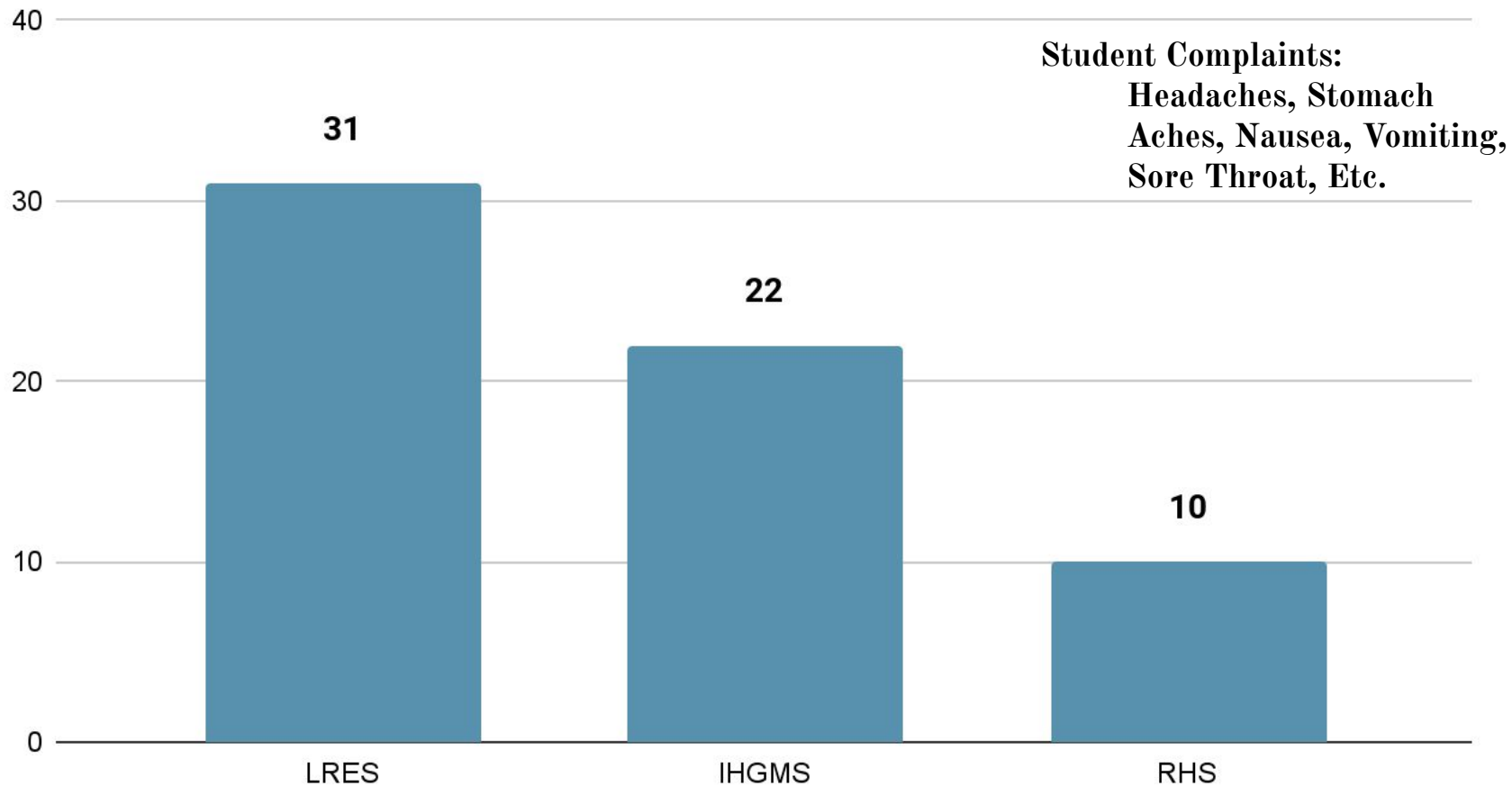
*Source: Quickbase by BH staff. **Does not include admin only responses.*

SY 2022-2023 Office Discipline Referrals

Top 5 behaviors:

- Physical Aggression
- Defiance
- Disruption
- Disrespect
- Inappropriate Language

Average # Student Complaint Nurse Visits Per Day SY 2022-2023



Our Response/ Priorities

District/Community Leadership Team (DCLT)

Members:

SAU + Building Administrators, Behavioral Health staff, Seacoast Mental Health Center, Raymond Coalition for Youth, Parents

Mission:

The Raymond School District and Community are committed to the **social and emotional wellness of students**. Key stakeholders and decision makers provide collaborative guidance to support the wellness of our school communities by **identifying resources and implementing the multi-tiered system of support framework**.

DCLT Areas of Focus

1. Solidifying student crisis response procedures
2. Increasing Tier 1 fidelity
3. Improving behavior data collection processes
4. Ensuring family engagement is a priority in truancy interventions

Other Priorities

- Tiered supports inventory and community resource map
- Improve behavioral data based decision making
- Increase communication out to the whole school and community about behavioral health needs/supports
- Increase behavioral health related professional development opportunities for all staff
- Plan for sustainability beyond grants (positions, programs, activities)

Thank you!

